
User Guide

MMP3-39

Contents

- Know your player..... 5
 - Exterior and Keys..... 5
 - Display..... 5
 - Battery..... 5
- Basic Functions..... 6
 - Access to Menus..... 6
 - Scrolling..... 6
 - List of Menus..... 6
 - Volume Adjust..... 7
 - Power On/Off..... 7
 - Play & Stop..... 7
 - Recording / Pause..... 7
- Keys Processing..... 7
 - Keys function definition..... 7
 - Keys processing definition..... 7
 - Play music..... 7
 - Simple Process..... 8
 - Equalizer mode..... 8
 - Lyric Settings..... 8
- Voice Recorder..... 9
 - Recording on 'Record Mode'..... 9
 - Recording mode..... 9
- Play recorded files..... 9
 - Settings..... 10
 - How to entry settings?..... 10
 - Option introductions..... 10
 - 'Language Setting'..... 10
 - 'Timing Setting'..... 10

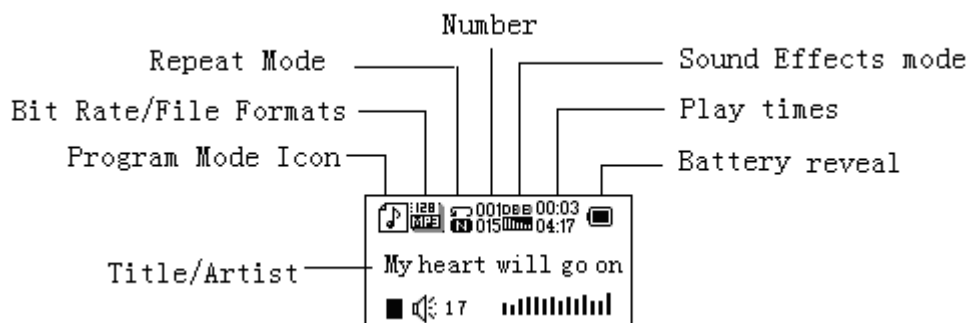
'Contrast Adjust' Setting.....	10
'Memory Status' Setting.....	10
'Firmware Version' Setting.....	10
● E-Documents.....	11
● Using USB Disk.....	12
Using USB Disk.....	12
● Classify Folders.....	14
● Delete Mode.....	14
Play Mode.....	14
● Repeat Mode.....	14
A-B Repeat.....	15
● New Function Recommends.....	16
Secret Space Function.....	17
● Troubleshooting.....	18

Know your player

● Exterior and Key



● Displayer



● Battery Level

The player shows capacity in 9 levels

Battery is full on 4.2V. As time goes on, capacity indication will monish.

Indicator shows blank when battery almost ran out. You should charge your battery at that time.



Please switch on the player before charge. This player cannot be charged in case of power off/



Please switch off power when not using the player.

Basic Functions

- **Access to Menus**

Press **Mode** to access menus.

- **Scrolling**

- Scroll music, menus

- Fast Forward / Reverse when playing music.

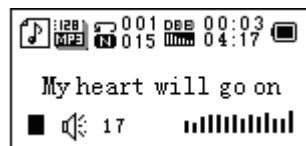
- **List of Menus**

To access different menu functions from main menu.

Main menu: (Press **Mode** to access)



Music Mode:



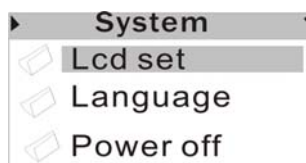
Recorder Mode:



Play Voice Mode:



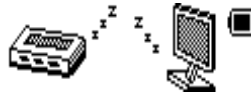
Settings:



E-Documents:



USB Mode (Connect to PC):



- **Volume Adjust**
Push **VOL** to access volume adjust, press **Next/Last** to increase or decrease volume.
- **Switch on/off**
Press and hold **play** to switch on when the player is off.
Press and hold **play** to switch off when the player is on.
- **Play & Pause; exit from submenu**
On music mode, Press **Play** to play music.
When playing music, press **Play** to pause; press and hold to stop playing.
- **Start / Stop recording**
On recording mode, press **Play** to stop.

Keys Processing

- **Keys Functions Definition**
 1. **Play**: Power On/Off, Play, Pause, Stop
 2. **MODE**: Entry main menu or exit from current menu.
 3. **VOL**: Volume Adjust
 4. **REC**: Entry recording mode.
 5. **Next**: Next, FF, Volume increase
 6. **Last**: Previous, Rev, Volume decrease
 7. **USB**: USB outlet
 8. **ON/OFF**: Power switch
 9. Earphone: Standard earphone outlet
- **Key Processing Definition**

Keys processing includes 4 actions: Press, Press and Hold, Push, Hold. **If not mentioned, all actions are Press.**

Press: Press a key and valid immediately;

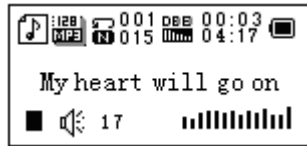
Press and Hold: Press a key and hold it at least 1.2s this action valid only once.

Push: Push a key, and valid when released.

Hold: events occur in such frequency then the key is holding such as Fast Forward and Reverse.

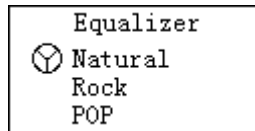
Play music

- **Simple actions**
 1. Put earphone plug into earphone outlet;
 2. Press and hold **Play** to switch the player on, then entry Music Mode and press **Play** to play music.
 3. Select a music: **Last**: Previous music;
Next: Next music.
Volume adjusts: Press **VOL** to change volume, press **Next** to increase, **last** to decrease.
- **Equalizer Mode**
 1. When playing music



2. Press **Mode** to entry play submenu;
3. Push **Next** choosing Equalizer Mode;
4. Press **Mode** to entry 'Equalizer Mode' submenu.

Select an equalizer:



5. Detail of each equalizer (EQ):

Natural
Rock
Pop
Classical
Soft
Jazz
DBB

6. Push **Next** to select an EQ and press **Mode** to confirm.

● Synchronous Lyric Display

The player supports lyric files with *.LRC suffix, and displays synchronously.

How to use lyric files?



Please make sure the lyric has the same name to the music

For example:

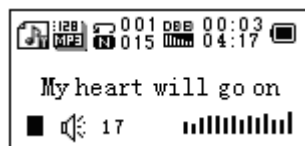
Music file: My heart will go on.mp3

Lyric file: My heart will go on.lrc

How to know if lyric available?

If lyric matched, the icon “” will be replaced into “”.

1. When marched lyric available:



2. Press and hold **Mode** to entry lyric interface;
3. Lyric displays
4. Press **Mode** return to music mode.

Voice Recording

Please make sure the battery has enough capacity before making record.

Each fold can save up to 99 voice recording files.

● Recording on “Record mode”

1. .Entry main menu:



2. Push **Next** scroll to Record mode

3. Push **Mode** to select Record mod, screen will display as below:



4. Press **Play** to start recording.



The player only responses to **Play** and **A-B** when record processing

● **Select Record Type**

1. When in the interface of 'Record stop'

2. Press **Mode** to entry record submenu

3. Push next scrolling into 'Record type' submenu then presses **Mode** to select it.

Fine record	wav file, fine quality
Long-time record	act file, normal quality
Super REC	Specification hiahbirate Voice memo

4. Press **Next** to choose appropriate type and press **Mode** to select it

5. Press **Play** to start recording.

Play recorded files

1. Entry main menu

2. Push **Next** to choose 'Play mode'

3. Push **Mode** to entry playing interface

4. Press **Play** again to play the file.

5. Choose voice record files.

Last: Select previous file;

Next: Select the next file;

6. Volume control

Push **VOL** to access volume adjust, press **Next/Last** to increase or decrease volume.

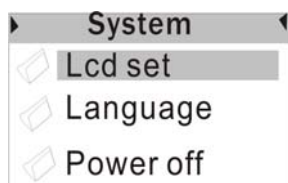
● **Entry Settings**

You can set system performances here, options may vary in different firmware version

1. Entry main menu

2. Push **Next** Scrolling into "Settings"

3. Press **Mode** to entry.



● **Options introduction:**

(Backlight Time)	Screensaver setting
(Language)	Choosing different languages
(Timing shut off)	Setting a count down time in minutes, the player will shut off when time out.
(Contrast Setting)	Setting display's contrast
(Memory Status)	Check memory space and usage status
(Firmware Ver.)	Version of player's firmware
(Exit)	Exit from Setting interface

● **List of menus:**

- LCD set
The operation method according to. "Equalizer" Enactment
- Language Setting
The operation method according to. "Equalizer" Enactment
- Turning off Setting
The operation method according to. "Equalizer" Enactment
- 'Memory status'
You can check total memory space and the percentage of usage.
- 'Firmware upgrade'
Use for upgrade player's firmware.



Tips: Press Play can exit current menu quickly. The function is valid on all other menus.

Reading Documents

On main menu, press **Next/Last** choosing e-Document, press **Mode** to entry corresponding submenu:

- **Select Folder:** Select the root directory of flash disk.
Press **Mode** to entry 'Select Folder' interface, press **Play** to select a file.
Note: You do not need to select a folder if the file you want to read is in root directory.
- Push **Next** to choose 'Read document', then press **Mode** to confirm. While reading, press **Next** or **Pre** to scroll.



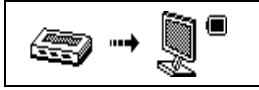
9、 Using USB Disk

The player is also a standard USB disk. Supported by Windows98 (drivers needed), Windows 2K or above (no need for drivers), Mac OS 10.3, Red hat Linux 8.0 or above.

The player supports USB power supply, can be used without battery when connected to PC. To entry, when on 在 'waiting mode' press **Mode** return to main menu and choose the operation you need.

This player supports Suspend mode.

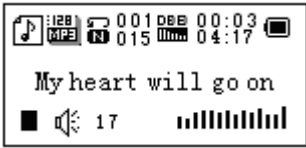
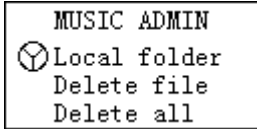
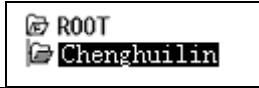

When connected to PC, The player works on the three modes below:

1. Waiting 	2. Downloading 
3. Uploading 	

Other settings

- **Choose other fold (Stop submenu)**

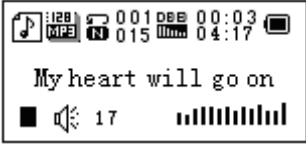
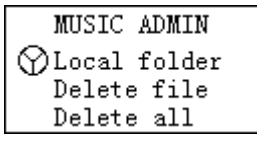
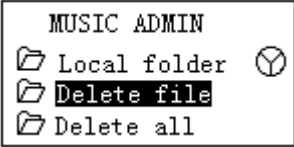
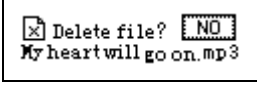
You can classify files into several different folders that ease to manage them (folders should be created on PC). The player can identify 9 folders in root

1. When stopped 	2. Press Mode to entry Stop submenu 
3. Press Mode to entry folder choosing interface 	4. Press Next or Last to choose a folder 
5. Press Mode to entry the selected folder	

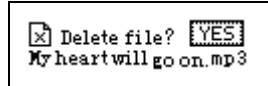
Please note: You can set folders independently in Music / Recorder / Play mode

- **Delete file (Stop submenu)**

You delete correspond files/channels in each Music/Play modes.

1When Stopped. 	2.Press Mode to entry Stop submenu 
3.Press Next or Last to choose 'Delete file' or 'Delete all' 	4. Press Mode to entry delete interface. 

5. Push **Next** to choose “YES”



6. Press **Mode** to confirm delete

‘Delete all’ will delete all files in current folder of current mode. I.e. Choose ‘Delete all’ in Music mode will delete all music files; recorder files will not be affected.






Please safely removed player and unplug USB cable after delete files on PC, otherwise some files will not be removed.

- **Play mode (Play submenu)**

You can choose different play mode (i.e. repeat, shuffle) when playing music or recorded files.

The first option on Play submenu is ‘Play mode’

- **REPEAT**

 Normal	Playing music files in sequence until the end of folder
 Repeat One	Repeat single music file
 Repeat All	Repeat all music files

- **Repeat mode (Play submenu)**

Press **-B** to entry or


Entry from Play submenu:

- **A-B Repeat**


1. When play music or recorder
2. Push **Mode** to entry play submenu
3. Push **next** scrolling into ‘Repeat Mode’ option
4. Push **Mode** to entry

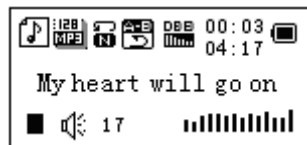
Repeat Mode: ‘A’ of Symbol  flashes, waiting for starter A

5. Push Next to select ‘A’

‘B’ of symbol  flashes, waiting ender B

6. Push Next to select B

Symbol  fixed and starting repeat between A-B, while playing, you can push **Last** to reset A point.



- **New Function Recommends!**



About Secret Space

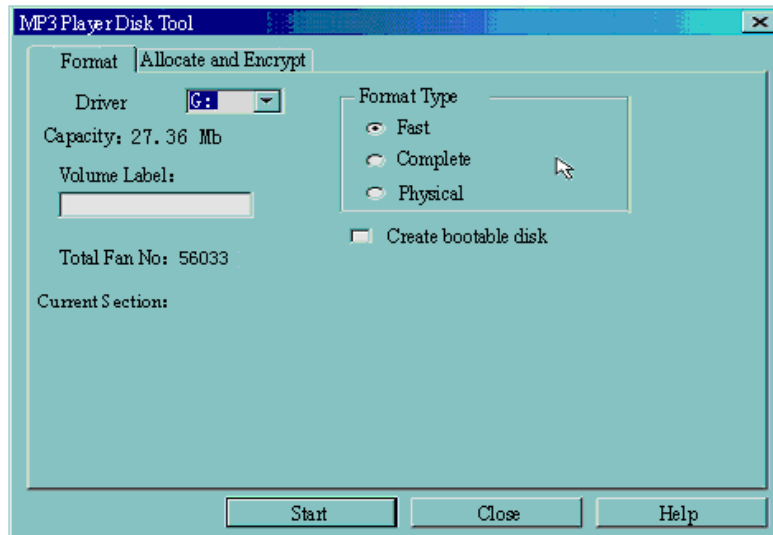
Some MP3 user may worry about divulging secret. They do not want others to find private information contained, therefore these data have to be removed before lend their own MP3 to others. It makes some trouble.

However, this problem has totally solved by ‘Secret Space’ technique!

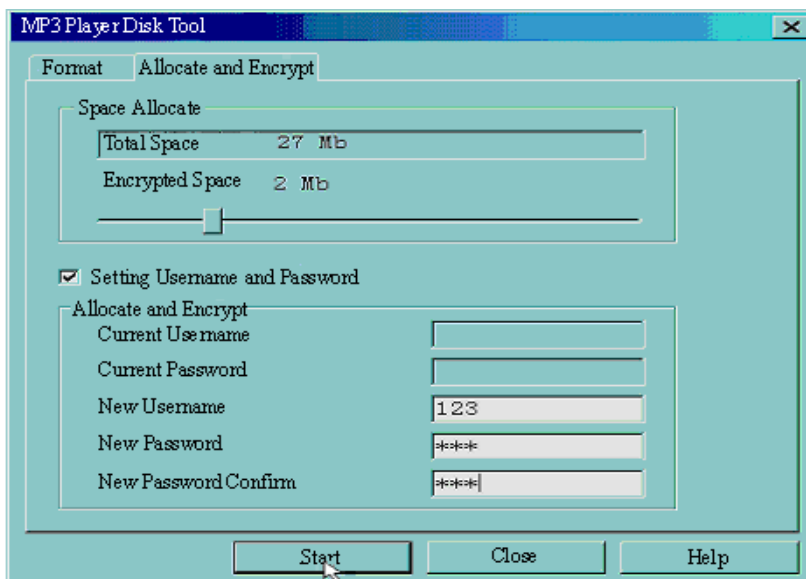
You can use provided software to divide the whole USB disk into two parts, and encrypt one of them. You can move your privacy into the encrypted part; they will be protected by password.

To active 'Secret Space':

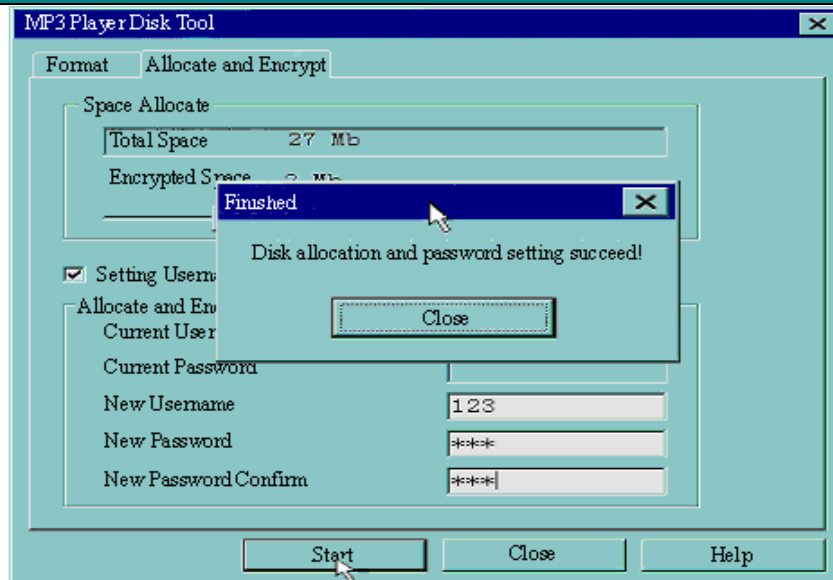
1. Connect your player to PC
2. Run *MP3 Player Disk Tool* which can be found in provided CDROM



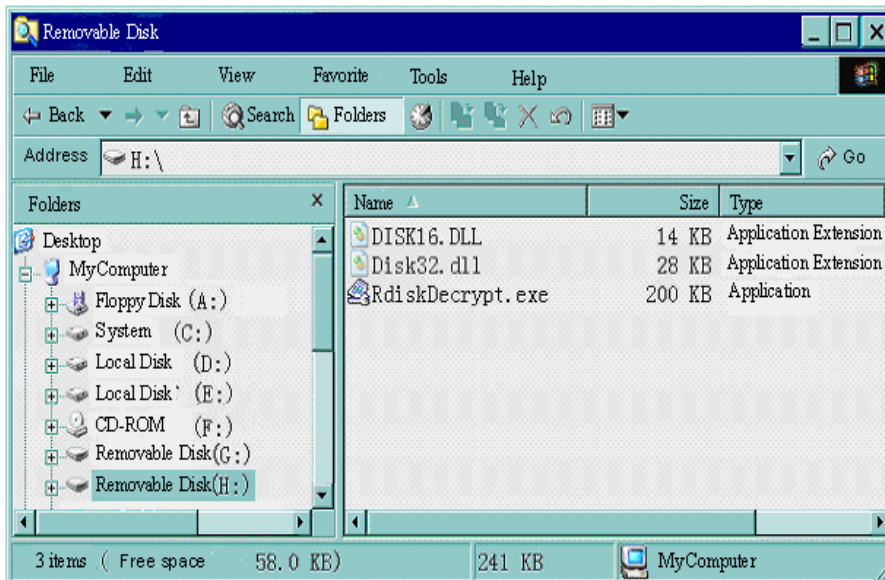
3. Click 'Allocation and Encrypt' card, Allocate appropriate space and set username and password, and then click Start.



4. After space allocation, shown as below:



5. Click 'OK' to restart.
6. After restart you will find two disks (only one disk can be seen on Windows 2K SP4 or prior), click the encrypted disk (the second one), you will find three files, two are hidden, one is executable



7. Running executable file 'RdiskDecrypt.exe' and input username and password. If all are correct, disk will be opened, and files can be copied into.



8. You must enter username and password each time access encrypted disk.



Warning: Divide one disk into parts will remove all data, and so does combine process.



Warning: Please remember username and password. If you forget it, you can only making combine processing and you will loss all encrypted data.

● Troubleshooting

No Power	Check if battery had installed properly Make sure you have switched the player on
No Sound	Make sure volume is not on 0 position and the connection to earphone is valid Please make sure the earphone is clean Damaged MP3 files may have noise and even cannot be played
Strange characters on display	Make sure you have chose correct language
Cannot Download Music	Check USB cable, and make sure the player is properly connected to the PC Check if the driver has well installed Make there is still blank memory

