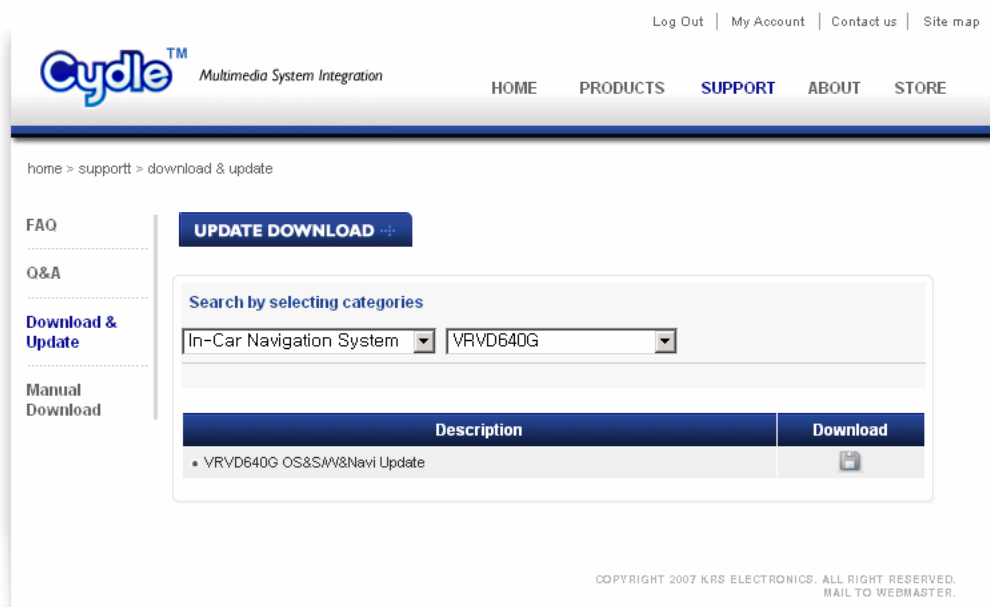
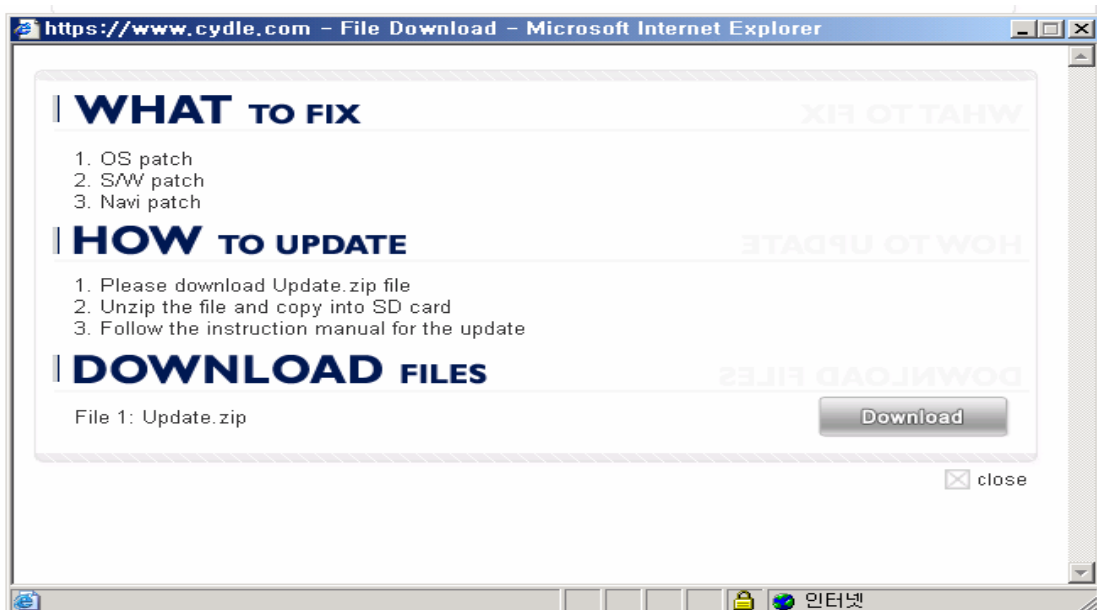


Update Manual

1. Please register and login to www.cydle.com by following the instruction on the web.
2. After you login, you can find your device type and name from **Support** Menu to download any patch.



3. If there is any file for patch, then you can download it by clicking the Download icon.

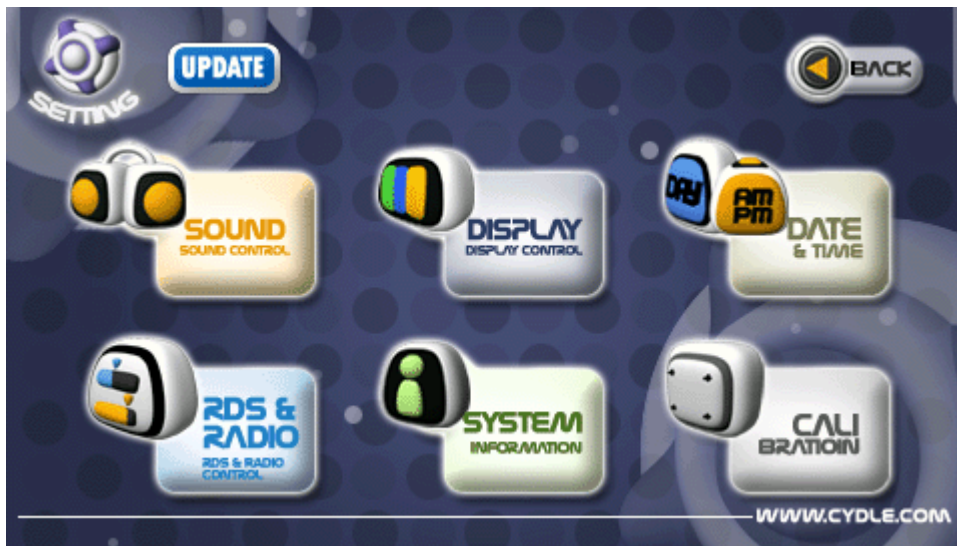


4. After the downloading, please unzip the file and copy into SD card.

5. Insert SD card into the slot on the front panel.
6. Turn the power on.
7. Click Setting from the Main Menu.



8. Click Update Icon on the upper left of the screen.(Blue Icon)



9. You can choose what to patch or update. (It can be S/W or OS or Navi S/W)



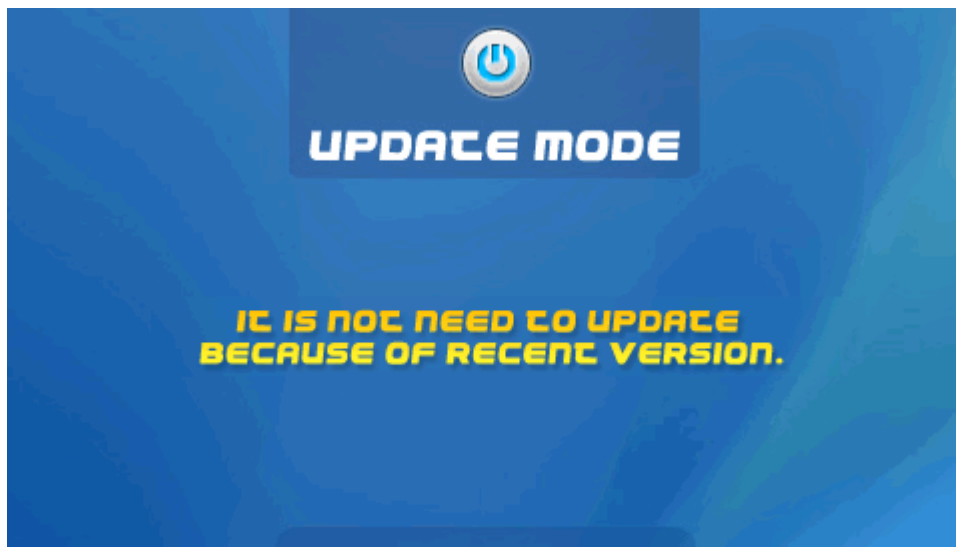
10. Please do not turn the power off until update is complete.



11. After download complete, you will see the following screen and it will reboot automatically.



12. If the version of the file in the SD card is same or older, it will show you the message as below and stop proceeding to update.



13. If you choose update option which is not contained in SD card, it will show you following message

