

MARQUANT[®]

WIRELESS NETWORK PLAYER BOX
MODEL :DS-M2

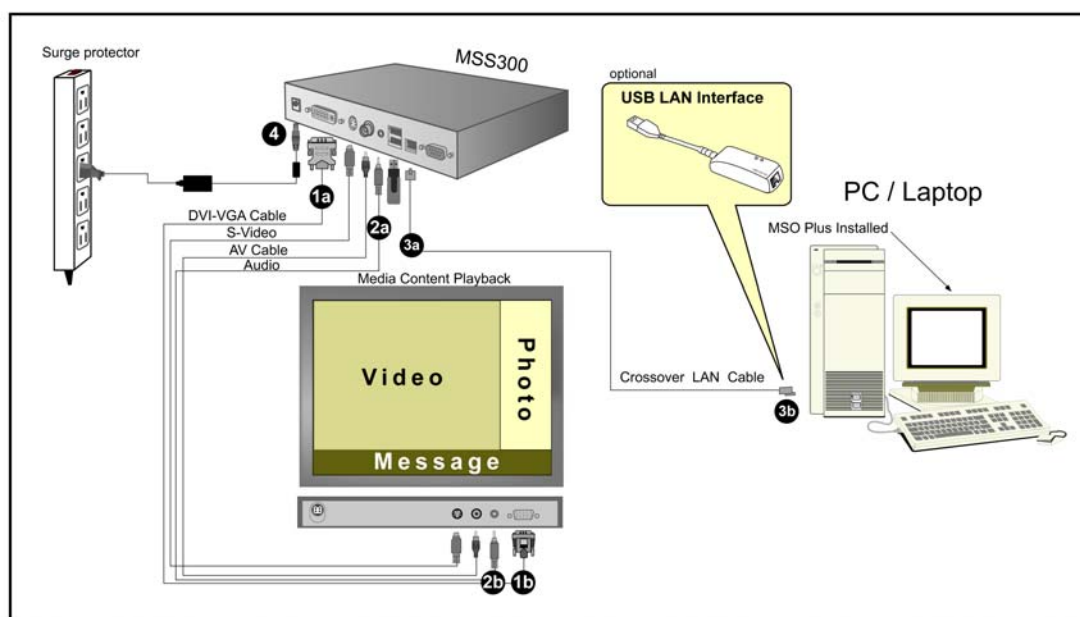
QUICK START GUIDE V1.3a



Simplicity
Functionality
Reliability

This educational package includes everything you need to assist you experience the basic file editing and transferring. Please refer to the complete user manual for all powerful features that MSO Plus offer.

Part 1 Connecting Cable



- Step 1a** Choose the video output (DVI/S-video/Composite) you would like to use and connect the cable.
- Step 1b** Connect another end of the cable to your monitor.
- Step 2a** Plug audio cable into audio jack.
- Step 2b** Connect another end of audio cable to monitor
- Step 3a** Plug crossover Ethernet cable into Network Player Plus LAN port*¹
- Step 3b** Connect another end of crossover Ethernet cable to the LAN port of Management PC*².
- Step 4** Plug the DC end of the power adapter into the power connector of the Network Player Plus unit; then, plug the AC end to an electrical outlet. The Network Player Plus will power up immediately.

¹ The crossover Ethernet cable is for you to directly connect Network Player Plus with the management PC. You can use normal Ethernet cable if you have a hub in between

² The USB-LAN interface acts as an extra network card in a PC. You can also choose using USB-LAN interface in between if you would not like to change the IP setting of your existent network card. The driver installation of USB-LAN interface will be needed if your PC does not detect this device automatically.

You can check the firmware version, client LAN IP, system mode (active mode), and server IP in the beginning of system boot-up.



Integrated Display

Please do step 3 to step 4 above accordingly.

2. Getting Started

Step 1. Install MSO Plus

Double click the “**setup.exe**” icon from product CD and follow the instruction to complete the MSO Plus installation.



Step 2. Start MSO Plus and Set Your Password

a. Double-click MSO Plus icon on your desktop to start MSO Plus.



b. A pop-up window will guide you to set up your own password.*3



³ The length of password has to be at least 6 alphanumeric characters. We strongly suggest you select a password consisting of uppercase and lowercase letters, numbers, and special characters.

Step 3. Configure server/client IP

The factory setting for every Media Signage Plus is listed below.

Factory LAN Setting

IP mode	DHCP
IP port	8001,8002,8003* ⁴
Server IP (the IP that Network Player Plus connects to automatically)	192.168.0.188

The default IP mode is DHCP and it will automatically switch to Fixed mode if no IP is assigned to Network Player Plus unit.

IP mode	Fixed
LAN IP	192.168.0.128
LAN Subnet Mask	255.255.255.0
LAN Gateway	192.168.0.1

Factory Wireless LAN Setting

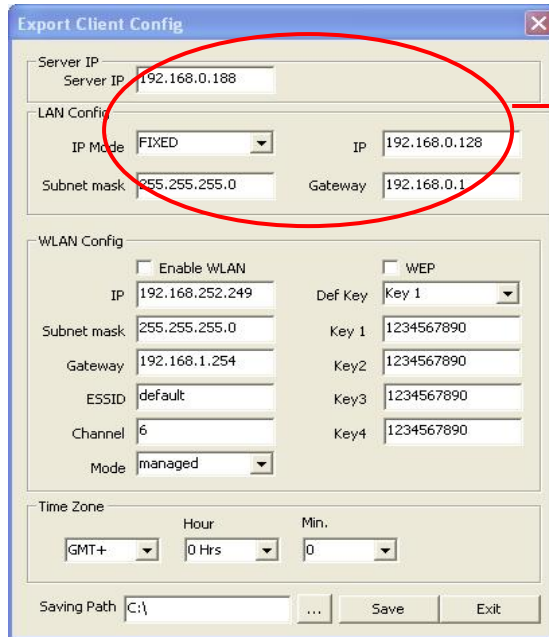
WLAN	Disabled
WLAN IP	192.168.252.249
WLAN Subnet Mask	255.255.0.0

Network Player Plus connects to the server actively; therefore, you will need to either change the IP that NP Plus connects to or configure the IP address of your PC to establish communication channel. We provide a utility to configure client settings in you PC and use USB flash drive to apply those configurations in Network Player Plus unit.

Configuration via USB Flash Drive

1. Click the "**Config**" button from MSO Plus, and then click the "**Client Config Export**" button from the pop-up window.
2. Make setting changes.
3. Browse to the location (USB flash drive) you would like to save the files.
4. Click the "**Save**" button.
5. Click the "**Exit**" button.

⁴ If your PC is behind a firewall, please make sure port 8001, 8002, 8003 are open. Please refer to the **Troubleshooting** section in this manual for detail on setting firewall exceptions.



Default Subnet Mask: 255.255.255.0
 So be aware that the first 3 digits of Server IP and Client IP have to be identical. You can change the Subnet mask to have wider IP range.

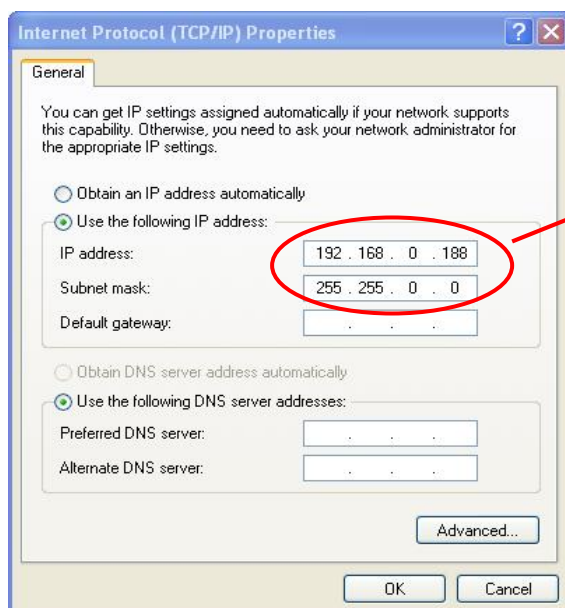
6. Take out the USB flash drive and plug it into Network Player Plus unit.
7. Reboot the Network Player Plus to apply settings.

Configuration via LAN

If you choose to change the IP address of your PC, please make sure your desktop or laptop's IP address comply the following rules.

Path to call Internet Protocol(TCP/IP) Property:

- ✓ Click Start → Control Panel → Double-click on Network Connections.
- ✓ Right-click on Local Area Connection → select Properties.
- ✓ On General tab , double click Internet Protocol (TCP/IP)
- ✓ Setup IP as the following figure.



The IP address of your server PC has to be 192.168.0.188 in order to establish connection in the first time. Then you are free to set the server IP address.

- ✓ Click **OK** to confirm the setting

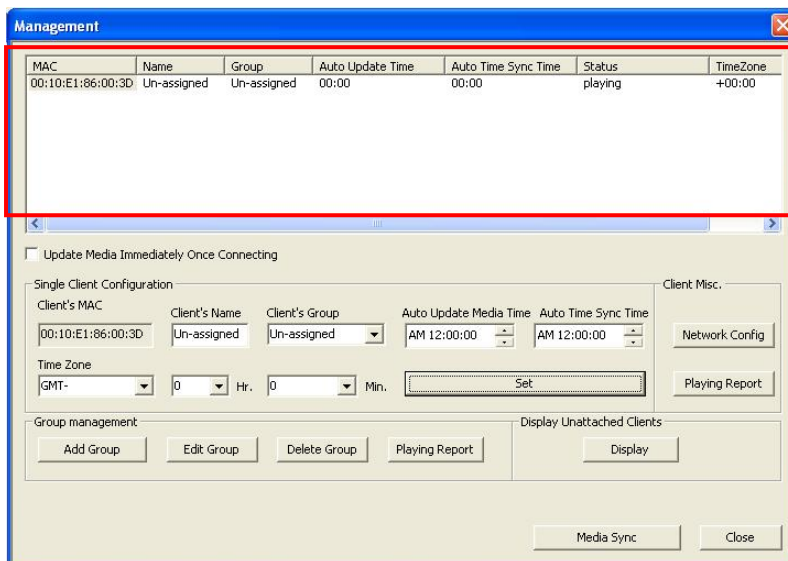
Step 4. Check Server-Client Connection

If the server/client environment setting is correct and all cables are connected properly, you will see the client automatically log in to server when you open Management window in MSO Plus.

- Start MSO Plus and click Management button.



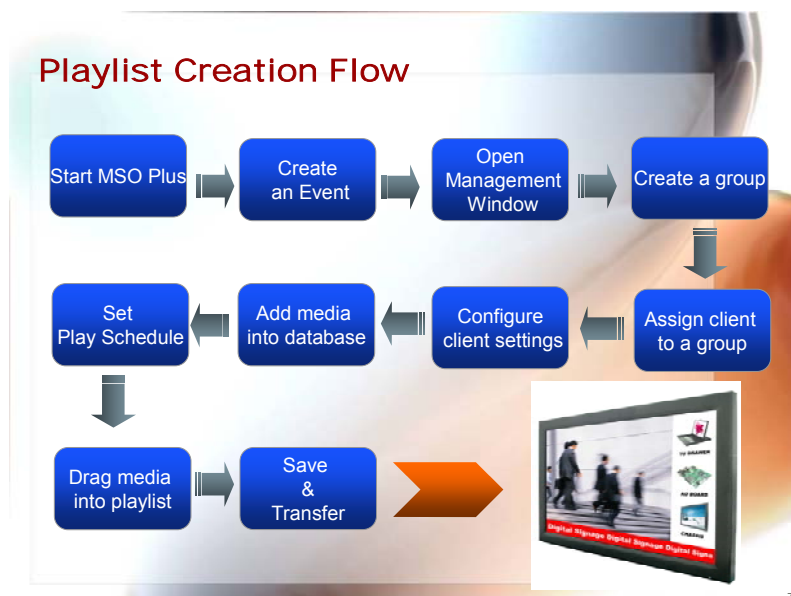
- Check client status.



- For setting up more than one new client, please connect only one client each time and make your Network settings. Otherwise it could get IP conflict with Fixed IP Mode.

Step 5. Simple Playlist Creation

The simple playlist creation flow is listed below; please refer to user guide for detailed steps.



✓ **Start MSO Plus**

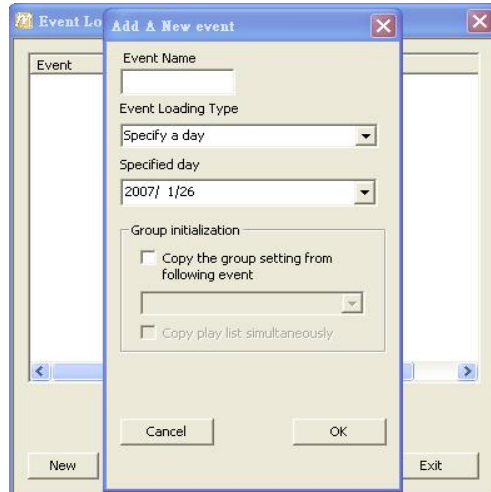
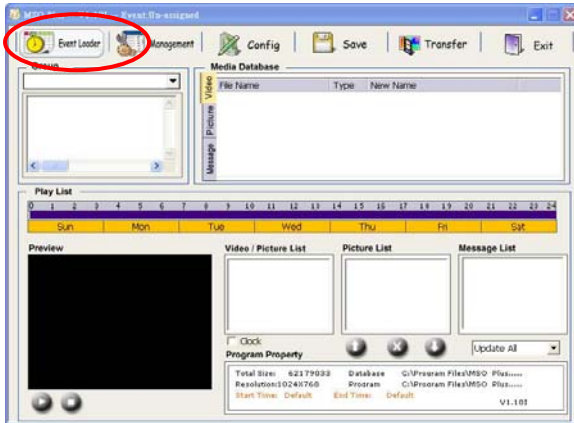
Double-click MSO Plus icon on your desktop to start MSO Plus.



✓ **Create an Event**

Create an Event

1. Click the “**Event Loader**” button in MSO Plus.
2. Click the “**New**” button, then a dialog will pop up on the screen.
3. Enter Event Name and Event Loading Type*⁵.
4. The system will load the new Event automatically once you click the **OK** button.



✓ **Open Management Window**

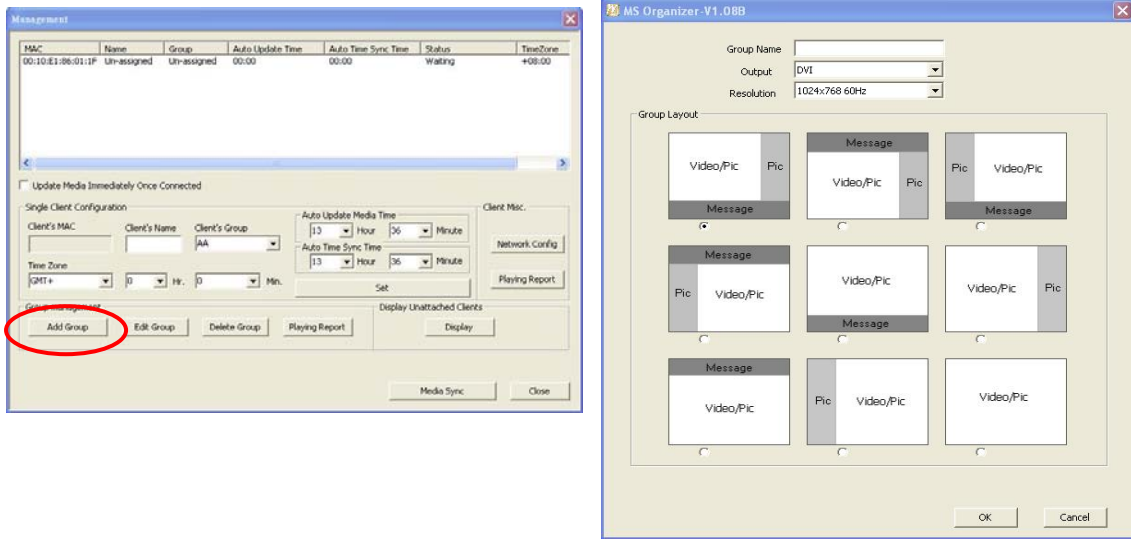
Click the **Management** button to open Management window.



⁵ The priority of loading type is: specific day > every weekday/weekend > everyday.

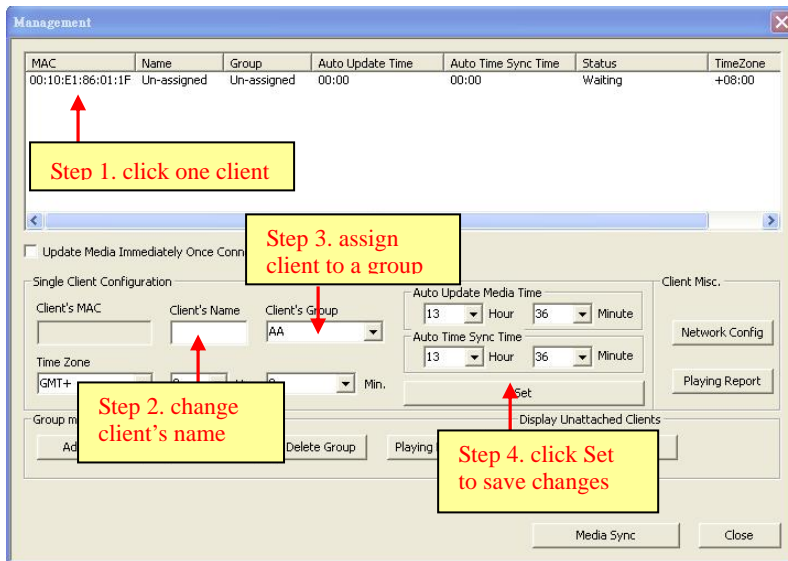
✓ **Create a Group**

Click the **Add Group** button to create a new group. Type in Group Name, choose Output, Resolution, and Group Layout. Click the “OK” button to complete group creation.



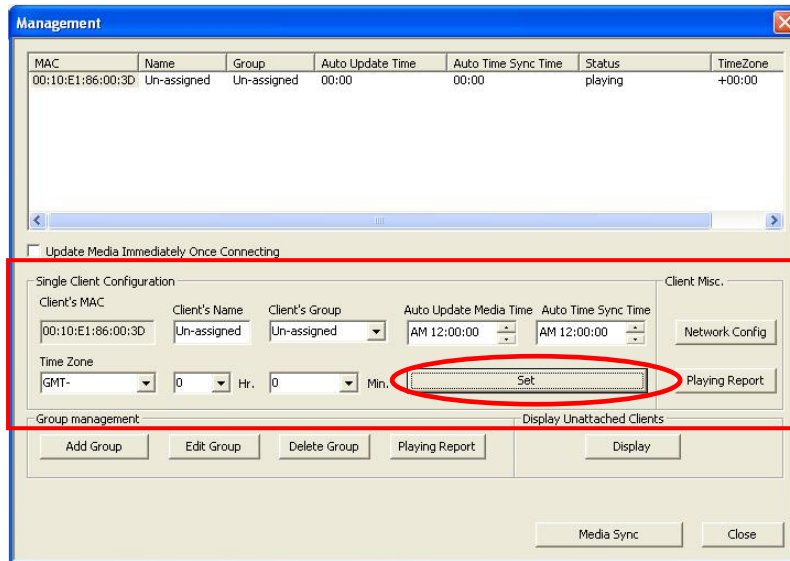
✓ **Assign Client to a Group**

The default name of each client is “Un-assigned”, it would be better to give it a different name in order to distinguish various clients. Each client **MUST** belong to a group to retrieve media playlist.



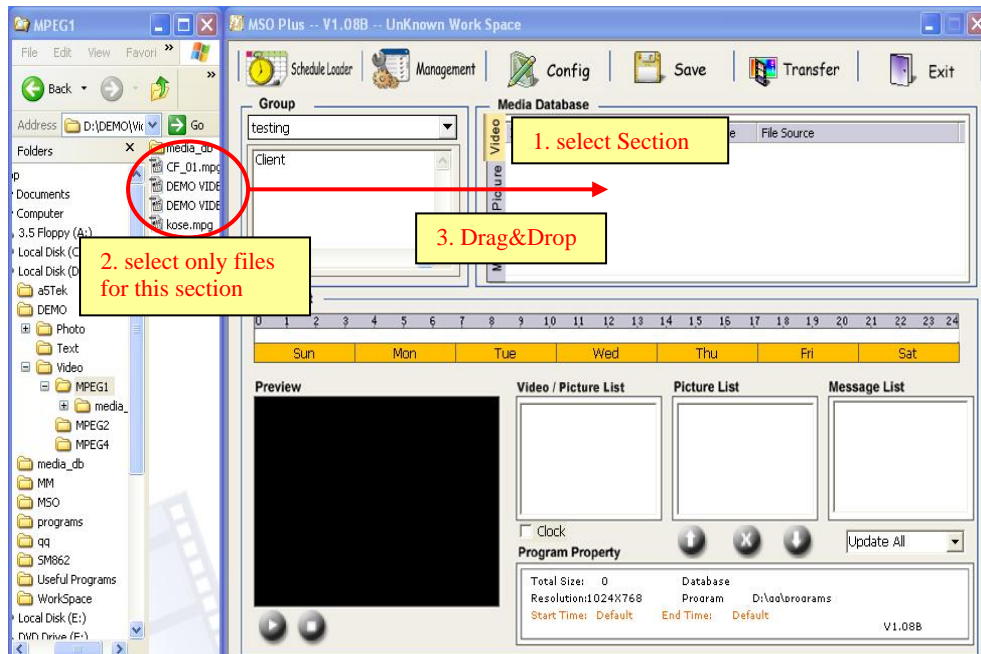
✓ **Configure Client Settings**

Do further client configurations such as Auto Update Media Time, Auto Time Sync Time, Network Config, and Time Zone. Note that you have to click the **Set** button to save changes.

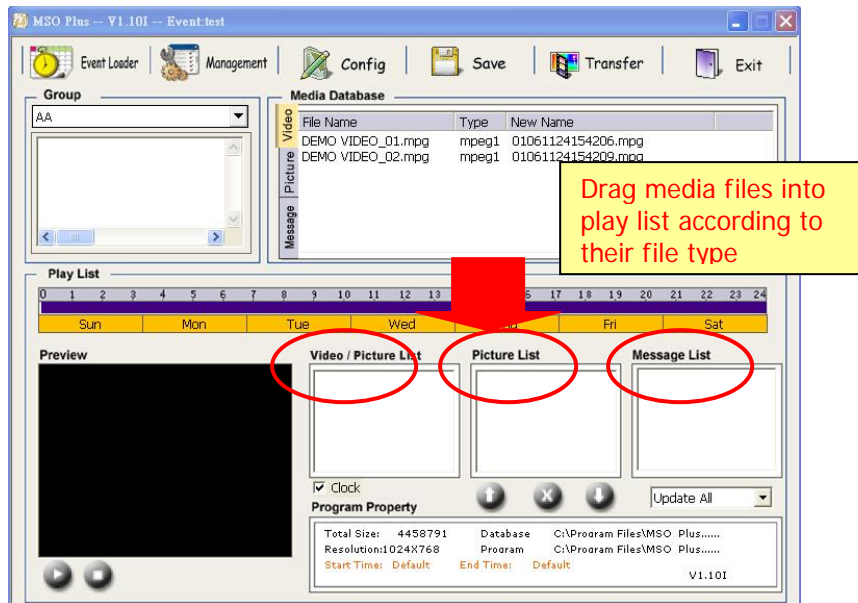


✓ **Add Media into Database**

- a. Use Windows Explorer to show your Media files.
- b. Select one Section of the Media Database first: Video / Picture / Message
- c. Then Drag and drop the related files video/graphics/text into the media database.
- d. Move only MPEG and AVI- Files Video, JPEG to Pictures and Text-Files to Message

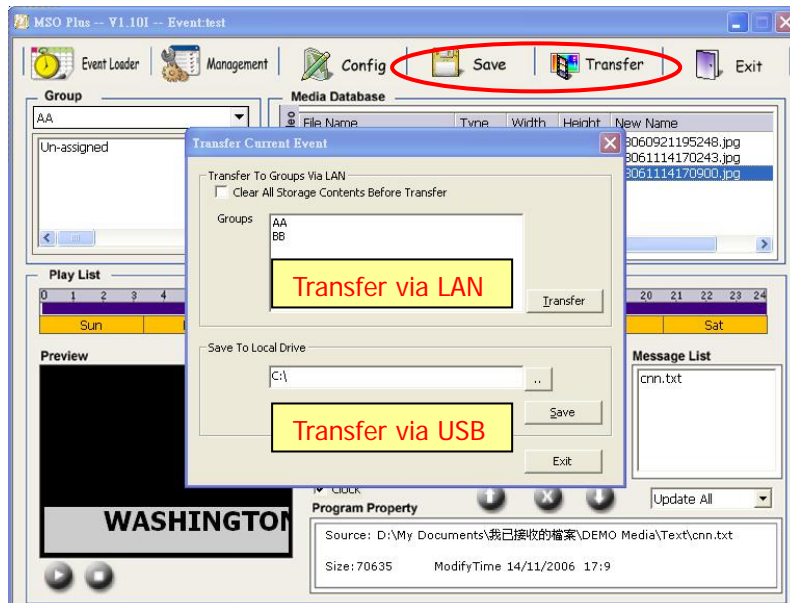


✓ **Drag Media into Playlist**



✓ **Save & Transfer**

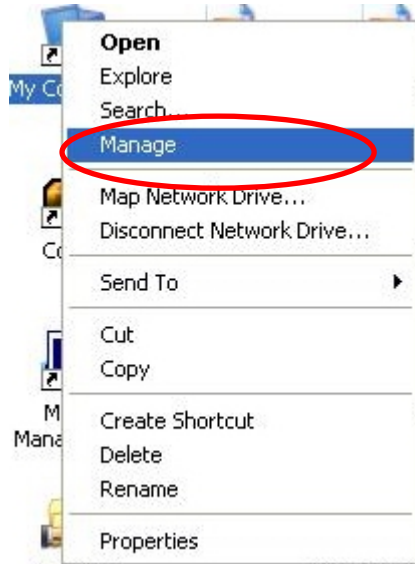
- a. Click the **“Save”** button to save the change.
- b. Select the group and click the **“Transfer”** button to start file transferring.
- c. You can also browse to the local drive (USB flash drive) and click the **“Save”** button to save the playlist in USB flash drive⁶. Plug out the USB flash drive and insert it into Network Player unit to copy the playlist into the internal storage.



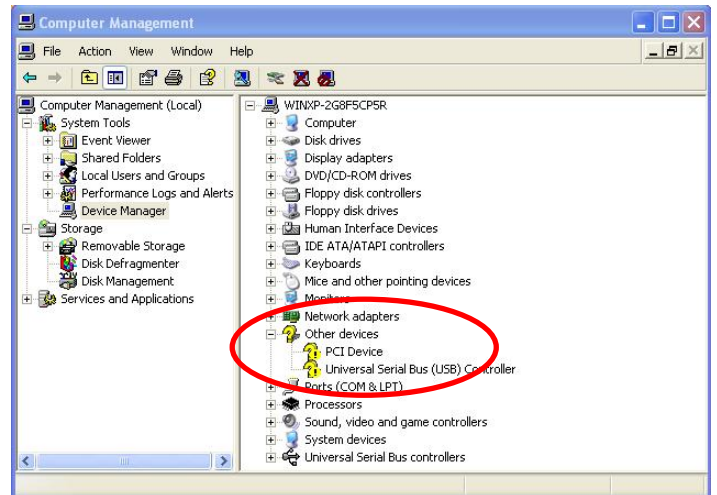
⁶ 7” Network Player does not include USB slot.

Appendix A. USB-LAN Driver Installation

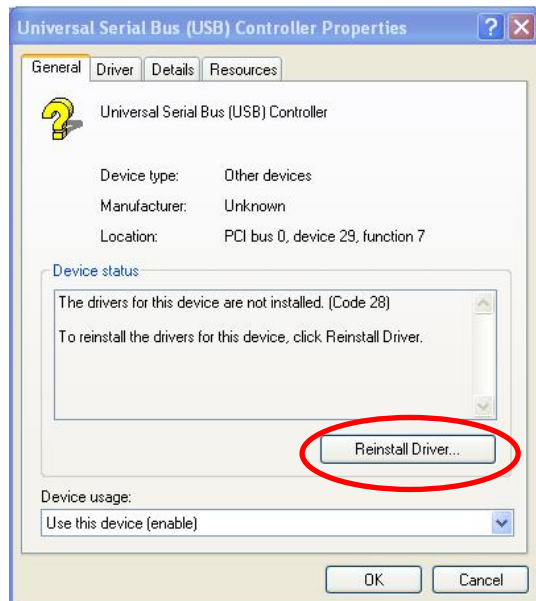
Step 1. Right-click on My Computer and choose Manage.



Step 2. You will see a question mark on USB Controller from Computer Management window.



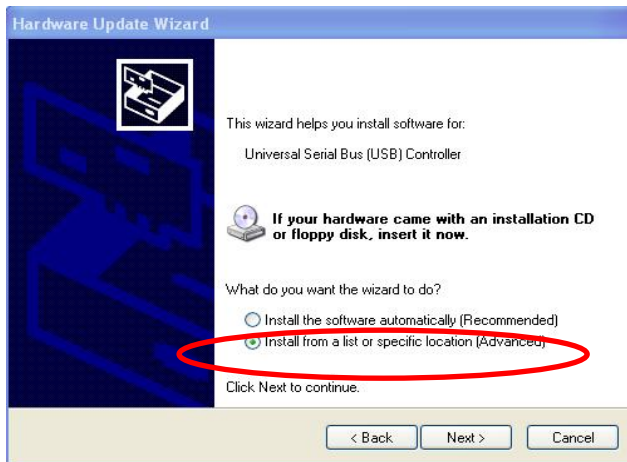
Step 3. Click the Reinstalled Driver button.



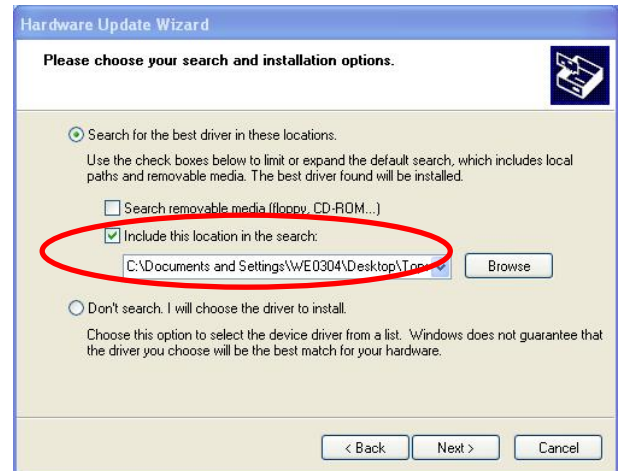
Step 4. Choose "Yes, this time only" then click Next



Step 5. Choose “Install from a list or specific location” then click Next.



Step 6. Browse the search path to Topcom101 in User Manual CD. Then click Next.



Step 7. The driver will be installed in a few seconds. You can click Finish button when the installation is done.

